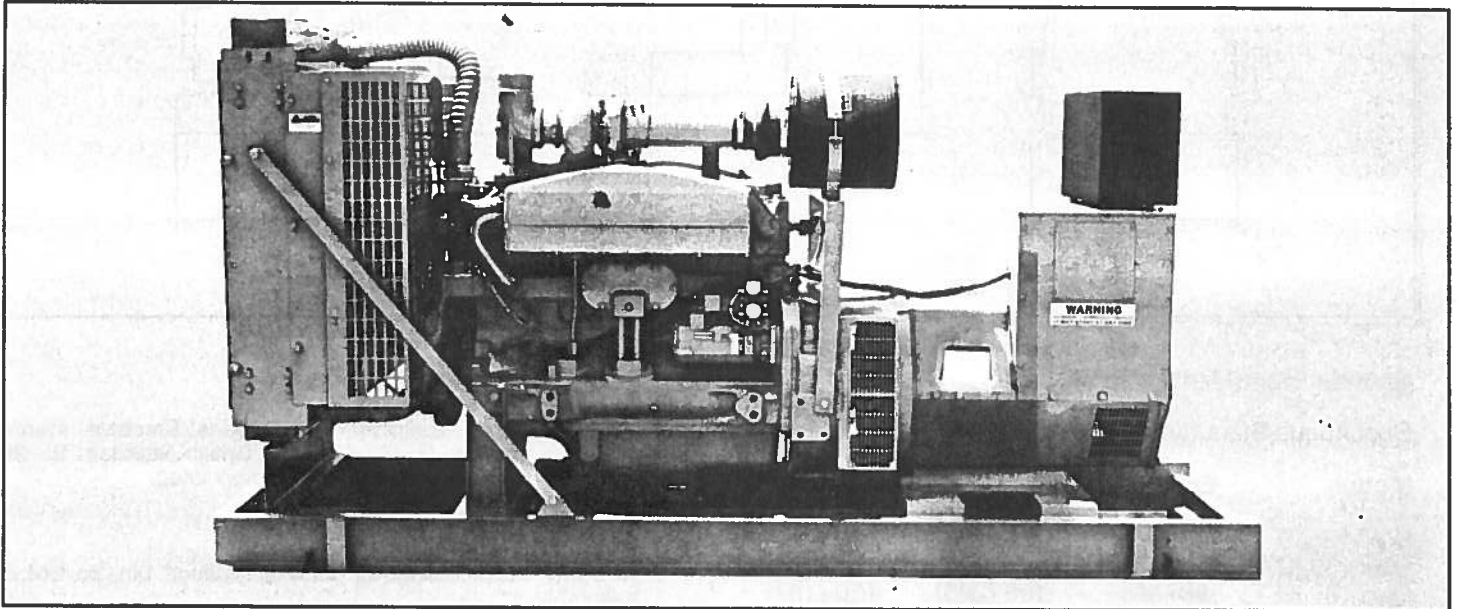




SOMMERS

125 - 180 KW

**DMT JD Series
Generator Sets**



Specifications

Model:	DMT125JD - DMT180JD	
Engine:	John Deere 6076T/6076A Diesel 211-300 HP @ 1800 RPM (175-250 HP @ 1500 RPM)	
Generator:	12 Lead Brushless	
Rated Output*:	60 Hertz	50 Hertz
Continuous Standby KW @ 0.8PF (KVA).....	125-180 (156-225)	110-150 (137-187)
Prime Power KW @ 0.8PF (KVA)	110-150 (137-187)	100-130 (125-162)
Governed RPM	1800	1500

*Other intermediate ratings are available.

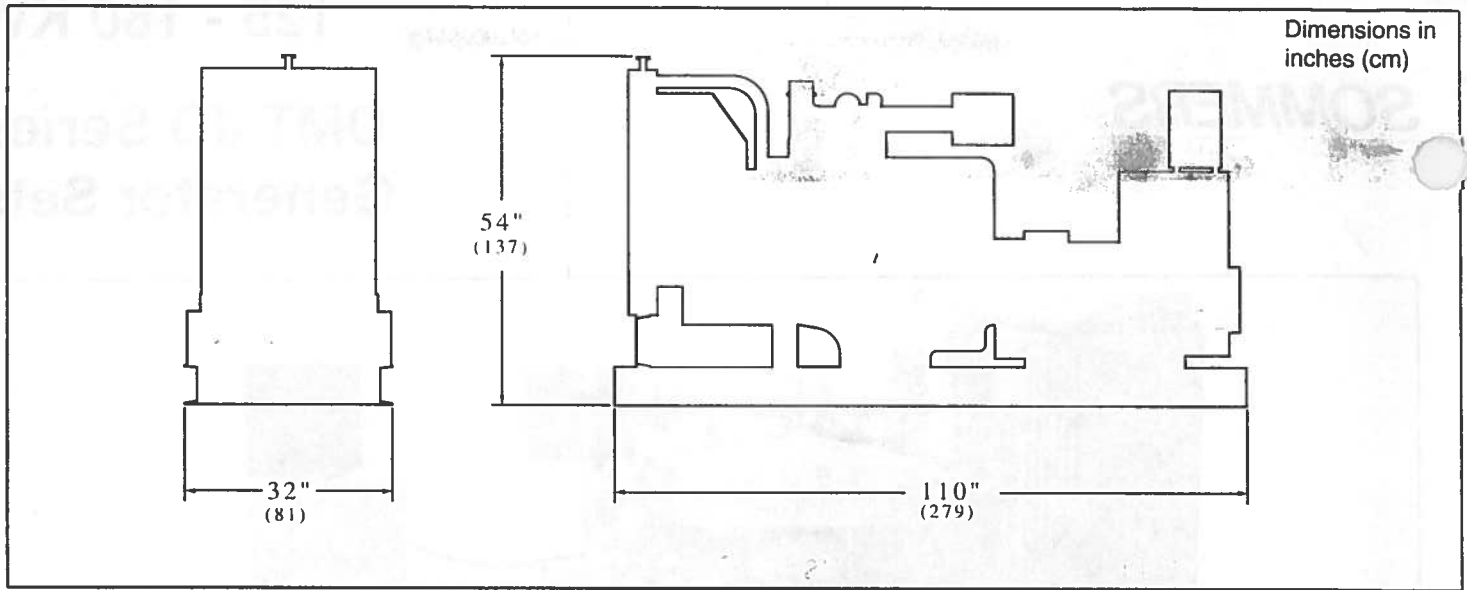
Operating Cycles.....	4	
Number of Cylinders.....	6	
Bore and Stroke.....	4.56 x 4.75 in (116 x 121 mm)	
Piston Displacement.....	466 in ³ (7.6 liters)	

Standby Rating is applicable for supplying electrical power in the event of normal utility power failure. No overload capability is available for this rating. This rating may be used for continuous service for as long as the emergency may last. This rating conforms with the BS 649:1958 overload rating and DIN "B" 6270.

Prime Power Rating is applicable for supplying electric power in lieu of commercially purchased power. Intermittent overloads up to the Standby Rating are allowable. This rating may be used for continuous service in commercial applications and it conforms with BS 649:1958 and DIN "a" 6270 for generator set applications.

Standard Equipment:

Air Cleaner:	Dry Type, Heavy Duty
Electrical:	12 VDC Alternator 12 VDC Starter
Exhaust Manifold:	Dry
Filters:	Lubricating Oil and Fuel
Generator:	Brushless Revolving Field, 4 Pole with Solid State Voltage Regulator
Instruments:	Unit Mounted with AC Meters, Engine Instruments, Shutdown Indicators and Automatic Start/Stop
Radiator:	High Ambient with Blower Fan and Guard
Safety Controls:	Low Oil Pressure, High Coolant Temperature, Engine Overspeed and Overcrank
Subbase:	Full Length, All Welded Structural Steel Construction



Specific Rated Output

Continuous Standby KW (KVA) @ 0.8PF

Model	Engine	60Hz	50Hz
DMT125JD	6076T	125 (156)	110 (137)
DMT150JD	6076A	150 (187)	130 (162)
DMT180JD	6076A	180 (225)	150 (187)

Prime Power KW (KVA) @ 0.8PF

DMT125JD	6076T	110 (137)	100 (125)
DMT150JD	6076A	134 (167)	117 (146)
DMT180JD	6076A	150 (187)	130 (162)

Approx. Fuel Consumption @ Full Load U.S. Gal/Hr

DMT125JD	10.6	8.7
DMT150JD	11.7	9.9
DMT180JD	13.4	12.0

Approximate Dry Weight

DMT125JD	3400 lbs. (1542 kg)
DMT150JD	3700 lbs. (1678 kg)
DMT180JD	3900 lbs. (1769 kg)

Generator Design Features

Construction: Conforms with National Electrical Manufacturers Association NEMA MG1-22; British Standard BS 2613-1970; Canadian Standards Association listed.

Bearings: Single row ball, shielded.

Cooling: Cast aluminum alloy ventilating fan, part of drive assembly.

Drive Coupling: Positive alignment, flexible laminated steel disk with 400% safety factor.

Exciter: Brushless rotating half wave rectification exciter solid state components inboard of rotor bearing.

Main Frame: Steel construction with rear mounted connection box.

Rotor: One piece 4 pole laminations, amortisseur windings and coil supports, layer wound, rotor shrunk fit and keyed to shaft, dynamically balanced to withstand 25% overspeed. Epoxy coated for abrasion and humidity protection.

Stator: 10/12 lead or 4 bus bar, suitable for 3 or 4 wire Y connection. Epoxy coated for abrasion and humidity protection. (Optional vacuum pressure impregnation)

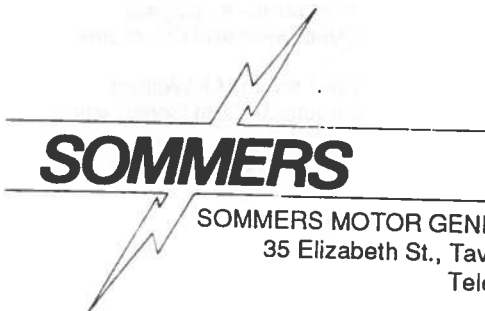
Temperature Rise: Rotor and stator Class F insulation meet NEMA Class F standards.

Voltage Regulator: Solid state with SCR control. Modular construction, RFI filter for suppression of conducted electromagnetic interference to levels meeting most commercial requirements and with under frequency protection. Protected against high humidity conditions by hermetically sealed power control diodes. Voltage regulation is within ±1% no load to full load.

* Voltages Available:

	3 Wire Y	4 Wire Y
60 Hz	208 to 240	120/208 to 139/240
	380 to 480	220/380 to 277/480
50 Hz	190 to 208	110/190 to 120/208
	380 to 416	220/380 to 240/416

* For other voltages. consult factory.



SOMMERS MOTOR GENERATOR SALES LTD.
35 Elizabeth St., Tavistock, Ont NOB 2R0
Telephone 519-655-2396
FAX 519-655-3176